

## Nordic alcohol statistics 1993–2006

The Nordic alcohol statistics are produced annually in cooperation between the Nordic statistic authorities. The statistics represent standardised data on alcohol sales, consumption, distribution, prices and some alcohol-related harms. The data presented here are gathered and updated on the basis of official statistics in each of the countries. The responsibility for the compilation of these statistics rotates between the Nordic countries, with the task this year given to Finland. Those responsible for the statistics in their respective countries are Jouni Vihmo in Finland (National Research and Development Centre for Welfare and Health, STAKES), Christian Lindeskov in Denmark (Statistics Denmark), Lena Sävelind in Sweden (National Institute of Public Health), Anders Bryhni in Norway (Norwegian Institute for Alcohol and Drug Research, SIRUS), Nauja Bisgaard in Greenland (Statistics Greenland), Edda Hermannsdottir in Iceland (Statistics Iceland) and Elsa Maria Olsen in the Faroe Islands (Rúsdrekkasøla Landsins). In 2006, these statistics were not published but they have now been updated for this publication.

The alcohol policy is in principal fairly similar in all the Nordic countries, with the exception of Denmark. In spite of the fact that not all the countries belong to the EU, the concept 'Nordic alcohol policy' is recognised within the European Union. Typical for the Nordic countries is a wish to cooperate also on alcohol policy and to maintain alcohol policy within the realm of national decision-making. With the exception of Denmark and Greenland, the aim of the Nordic monopolies is to minimize the alcohol-

related harms through pricing policy, restrictions on availability, and until recently, through import restrictions.

It is difficult to discern a common trend in the development of consumption in the Nordic countries. According to statistics, the level of consumed alcohol per inhabitant was highest in Denmark, followed by Finland and Greenland. Even though the levels and long-term developments differ between countries, during the last two years the consumption level has somewhat stabilised. From a longer perspective, the recorded alcohol consumption has clearly increased in Finland, Norway and Iceland. In Denmark, Sweden and Greenland consumption has on the other hand decreased. The biggest changes in the structure of consumption have taken place in Finland and Denmark, where the share of spirits has increased. The consumption of wine has experienced a steady growth in all Nordic countries. Consumption of beer has decreased in Denmark, while it has been stable elsewhere. Real prices of alcohol have decreased in all Nordic countries.

The statistics do not include so-called unrecorded consumption: private imports, home-made alcoholic beverages or smuggled alcohol. If this unrecorded consumption were included, the differences between the countries would diminish. The importance of unrecorded consumption has grown during the last decade in the Nordic countries. Its share of the total consumption is smallest in Iceland (below 10%), while in Sweden, it is about 30% and in the other countries it varies between 15 and 20%.

**Jouni Vihmo**, M.Soc.Sc., Planning Officer  
STAKES, Information  
P.O. Box 220  
FIN-00531 Helsinki  
E-mail: [jouni.vihmo@stakes.fi](mailto:jouni.vihmo@stakes.fi)

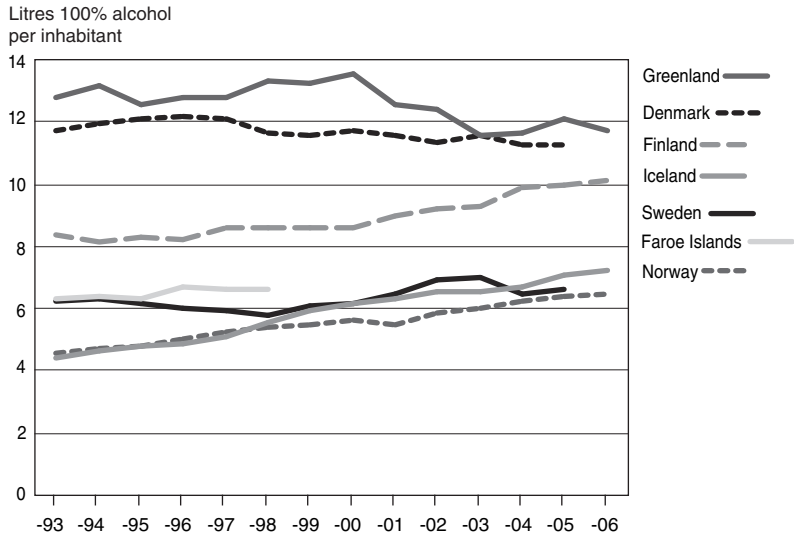


Figure 1. Litres of pure alcohol per inhabitant aged 15 years and older, 1993–2006.

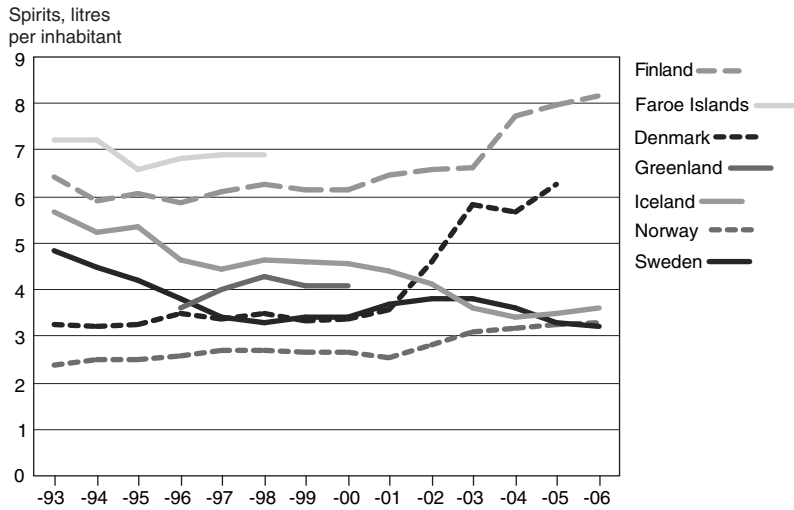


Figure 2. Litres of spirits per inhabitant aged 15 years and older, 1993–2006.

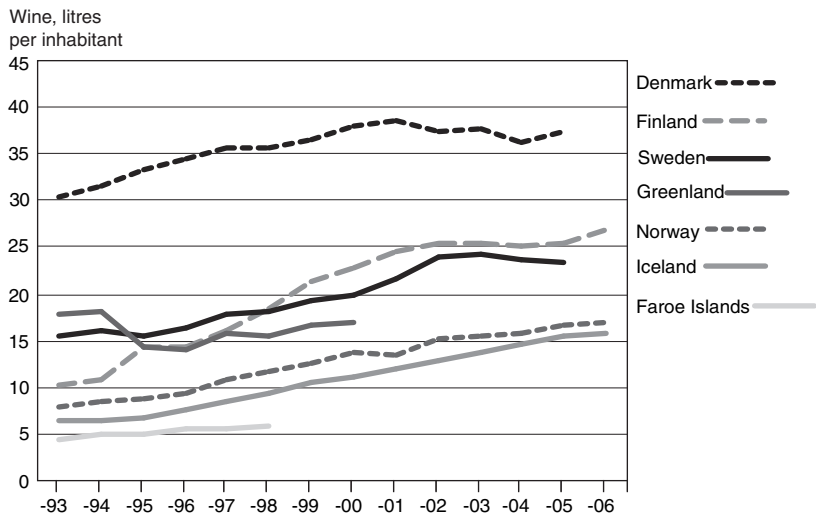


Figure 3. Litres of wines per inhabitant aged 15 years and older, 1993–2004.

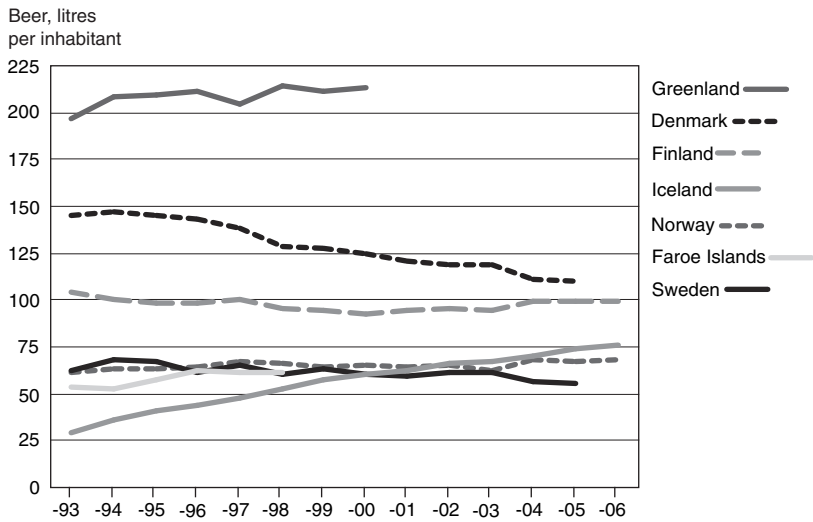


Figure 4. Litres of beer per inhabitant aged 15 years and older, 1993–2004.

**Table 1.** Annual sales of alcohol 1,000 liters, 2002–2006.<sup>2)</sup>

	Spirits	Wine	of which		Long drinks <sup>1)</sup>	Beer	of which	
			Fortified wine	Table wine			Strong beer	Medium beer
<b>Denmark</b>								
2002	20,083	162,726	..	..	..	520,171	..	..
2003	25,442	164,393	..	..	..	520,607	..	..
2004	24,797	159,134	..	..	..	486,779	..	..
2005	27,527	163,745	..	..	..	483,031	..	..
2006	..	..	..	..	..	..	..	..
<b>Finland</b>								
2002	28,187	108,759	4,314	104,445	24,049	410,449	28,625	381,824
2003	28,433	109,869	4,391	105,477	26,111	407,780	26,641	381,139
2004	33,517	108,250	5,026	103,224	25,314	428,548	25,803	402,745
2005	34,641	109,981	4,927	105,054	25,443	433,563	23,246	410,317
2006	35,754	117,020	4,715	112,306	30,422	434,956	22,614	412,342
<b>Norway</b>								
2002	10,234	54,953	..	..	5,884	236,391	1,373	228,305
2003	11,243	56,160	..	..	17,732	227,088	1,223	219,330
2004	11,631	57,842	..	..	8,725	249,099	1,245	241,786
2005	11,945	61,022	..	..	8,791	246,841	1,404	240,383
2006	12,291	63,286	..	..	9,063	..	..	..
<b>Sweden</b>								
2002	27,439	174,954	2,470	172,486	..	446,693	257,393	189,300
2003	26,567	178,314	5,493	172,821	..	448,499	265,348	183,151
2004	24,201	173,839	2,385	171,454	..	419,371	255,807	163,564
2005	24,305	175,926	2,358	173,568	..	415,810	261,176	154,634
2006	..	..	..	..	..	..	..	..
<b>Iceland</b>								
2002	909	2,816	313	2,502	343	14,566	14,566	..
2003	805	3,044	301	2,743	392	14,996	14,996	..
2004	772	3,304	292	3,012	382	15,987	15,987	..
2005	806	3,564	281	3,283	421	17,044	17,044	..
2006	863	3,745	286	3,459	408	18,160	18,160	..
<b>Greenland</b>								
2002	909	2,816	313	2,502	343	14,566	14,566	..
2003	805	3,044	301	2,743	392	14,996	14,996	..
2004	772	3,304	292	3,012	382	15,987	15,987	..
2005	806	3,564	281	3,283	421	17,044	17,044	..
2006	863	3,745	286	3,459	408	18,160	18,160	..

1) Island, Norway: Fruit drink, includes alcopops.

2) No new statistics for Faroe Islands.

**Table 2.** Annual sales of alcohol per inhabitant, 2002–2006.<sup>2)</sup>

	Litres per inhabitant aged 15 years and over				Litres of pure alcohol per inhabitant aged 15 years and over					Litres of pure alcohol per inhabitant
	Spirits	Wines <sup>3</sup>	Long drinks <sup>1)</sup>	Beer	Spirits	Wines <sup>3</sup>	Long drinks <sup>1)</sup>	Beer	Total	Total
<b>Denmark</b>										
2002	4.60	37.30	..	119.22	1.42	4.43	..	5.48	11.34	9.22
2003	5.82	37.61	..	119.12	1.60	4.47	..	5.48	11.55	9.38
2004	5.66	36.33	..	111.14	1.85	4.32	..	5.11	11.29	9.16
2005	6.27	37.27	..	109.95	1.78	4.43	..	5.06	11.27	9.15
2006	..	..	..	..	..	..	..	..	..	..
<b>Finland</b>										
2002	6.59	25.42	5.62	95.92	2.37	2.11	0.34	4.43	9.24	7.60
2003	6.61	25.55	6.07	94.84	2.38	2.19	0.36	4.37	9.31	7.67
2004	7.75	25.04	5.86	99.15	2.79	2.19	0.34	4.57	9.89	8.17
2005	7.97	25.29	5.85	99.70	2.82	2.24	0.31	4.59	9.95	8.23
2006	8.17	26.75	6.95	99.40	2.86	2.35	0.36	4.57	10.14	8.41
<b>Norway</b>										
2002	2.83	15.19	1.63	65.34	1.12	1.81	0.07	2.89	5.89	4.71
2003	3.09	15.42	4.87	62.35	1.22	1.84	0.22	2.76	6.03	4.82
2004	3.17	15.77	2.38	67.93	1.25	1.90	0.11	2.96	6.22	4.95
2005	3.25	16.61	2.39	67.20	1.28	2.00	0.11	2.98	6.37	5.04
2006	3.29	16.95	2.42	67.88	1.30	2.05	0.11	3.01	6.46	5.17
<b>Sweden</b>										
2002	3.80	24.10	..	61.30	1.40	2.80	..	2.70	6.90	5.70
2003	3.60	24.30	..	61.30	1.30	2.90	..	2.80	7.00	5.70
2004	3.30	23.60	..	56.90	1.10	2.80	..	2.60	6.50	5.40
2005	3.20	23.50	..	55.40	1.10	2.90	..	2.60	6.60	5.50
2006	..	..	..	..	..	..	..	..	..	..
<b>Iceland</b>										
2002	4.11	12.73	1.55	65.81	1.58	1.59	0.07	3.29	6.53	5.02
2003	3.60	13.62	1.75	67.09	1.39	1.71	0.08	3.35	6.52	5.04
2004	3.40	14.56	1.69	70.46	1.31	1.83	0.08	3.49	6.71	5.21
2005	3.50	15.46	1.83	73.95	1.33	1.95	0.10	3.67	7.05	5.49
2006	3.61	15.67	1.71	75.99	1.36	1.97	0.09	3.78	7.20	5.66
<b>Greenland</b>										
2002	..	..	..	..	..	..	..	..	12.44	9.15
2003	..	..	..	..	..	..	..	..	11.59	8.58
2004	..	..	..	..	..	..	..	..	11.65	8.68
2005	..	..	..	..	..	..	..	..	12.12	9.08
2006	..	..	..	..	..	..	..	..	11.68	8.81

1) Norway: Fruit drink, includes alcopops.

2) No new statistics for Faroe Islands.

3) Finland: includes cider.

**Table 3.** Percentage of alcohol which is served in restaurants, 2002–2006.<sup>1)</sup>

	Spirit drinks	Wine	Beer
<b>Finland</b>			
2002	14	13	25
2003	13	12	24
2004	11	11	22
2005	12	11	21
2006	12	11	20
<b>Sweden</b>			
2002	14	13	34
2003	12	11	32
2004	15	12	32
2005	16	11	31
2006	..	..	..
<b>Iceland</b>			
2002	16	19	25
2003	16	19	24
2004	16	18	23
2005	20	18	22
2006	22	17	20

1) These data are not available for Denmark, Norway, Faroe islands and Greenland.

**Table 4.** Number of establishments licensed to sell alcohol.<sup>6)</sup>

	Number of retail outlets <sup>1)</sup>			Number of licensed outlets				Total
	All alcoholic beverages <sup>2)</sup>	Only beer <sup>3)</sup>	Total	All alcoholic beverages <sup>4)</sup>	Only wines and beer	Only beer <sup>3)</sup>	Others <sup>5)</sup>	
<b>Denmark</b>								
2002	..	..	..	11,395	..	..	..	11,395
2003	..	..	..	11,345	..	..	..	11,345
2004	..	..	..	11,184	..	..	..	11,184
2005	..	..	..	9,026	..	..	..	9,026
2006	..	..	..	8,777	..	..	..	8,777
<b>Finland</b>								
2002	299	6,996	7,295	5,011	230	3,780	..	9,021
2003	314	6,886	7,200	5,086	212	3,435	..	8,733
2004	320	6,839	7,159	5,107	202	3,147	..	8,456
2005	327	6,699	7,026	5,321	225	2,912	..	8,458
2006	331	6,398	6,729	5,441	247	2,706	..	8,394
<b>Norway</b>								
2002	176	4,336	4,512	4,908	1,776	98	..	6,871
2003	188	4,299	4,487	5,198	1,741	59	..	7,062
2004	195	4,361	4,556	5,695	1,349	48	..	7,092
2005	198	4,314	4,512	5,668	1,409	47	..	7,231
2006	..	..	..	..	..	..	..	..
<b>Sweden</b>								
2002	419	..	..	8,502	1,240	49	2,168	11,959
2003	420	8,800	9,220	8,707	1,180	49	2,146	12,082
2004	417	8,700	9,117	8,933	1,048	36	2,046	12,063
2005	411	8,600	9,011	9,210	1,001	37	2,058	12,306
2006	410	..	..	9,491	968	37	2,046	12,542
<b>Iceland</b>								
2002	40	..	40	..	..	..	..	..
2003	42	..	42	..	..	..	..	..
2004	45	..	45	..	..	..	..	..
2005	46	..	46	..	..	..	..	..
2006	46	..	46	..	..	..	..	..

1) These data are not available for Denmark.

2) Norway: Spirits and wines. From 1.3.1993 spirits, wines and strong beer. Sweden: Spirits, wines and strong beer.

3) Norway: Medium beer and strong beer. Sweden: Class 2 beer. Finland: beverages produced by fermentation with max 4.7% ethyl alcohol.

4) Denmark: licences usually include spirits, wines and beer.

5) Sweden: Clubs and dining cars etc., all alcohol beverages or only wine and beer or only wine.

6) Faroe Islands do not have this kind of statistics; no new statistics for Greenland.

**Table 5.** Number of import and production licences for alcohol, 2002–2006.<sup>1)</sup>

	Import licences				Production licences			
	Spirit drinks	Wine	Beer	Total	Spirit drinks	Wine	Beer	Total
<b>Finland</b>								
2002	167	170	167	185	87	95	52	120
2003	178	181	178	196	89	98	52	118
2004	187	190	187	205	94	103	55	121
2005	203	206	203	221	91	101	56	121
2006	218	224	218	236	89	100	58	120
<b>Norway</b>								
2002	159	169	168	193	6	15	17	26
2003	189	197	186	218	7	16	16	25
2004	..	..	..	..	..	..	..	..
2005	..	..	..	..	..	..	..	..
2006	..	..	..	..	..	..	..	..
<b>Sweden</b>								
2002	..	..	..	622	25	22	24	55
2003	..	..	..	671	28	24	30	65
2004	..	..	..	684	27	21	27	59
2005	..	..	..	737	31	27	31	62
2006	..	..	..	774	30	25	29	63
<b>Iceland</b>								
2002	..	..	..	88	2	1	2	5
2003	..	..	..	95	2	1	2	5
2004	..	..	..	100	2	1	2	5
2005	..	..	..	94	2	1	2	5
2006	..	..	..	100	2	1	2	5

1) These data are not available for Denmark, Faroe Islands and Greenland.



**Table 6.** Real price indices for alcoholic beverages.<sup>1)</sup>

	Real price indices for					Consumer price index
	Spirit drinks	Wine	Long drinks	Beer <sup>2)</sup>	Total <sup>3)</sup>	
<b>Denmark</b>	Year 2000=100					
2002	102	102	..	96	99	105
2003	95	102	..	96	98	107
2004	73	102	..	95	95	108
2005	73	101	..	94	93	110
2006	73	101	..	94	94	112
<b>Finland</b>	Year 2000=100					
2002	98	99	103	102	101	104
2003	98	100	104	103	102	105
2004	79	96	98	96	93	105
2005	77	95	98	96	91	106
2006	77	95	98	95	90	108
<b>Norway</b>	Year 1998=100					
2002	85	94	..	99	95	110
2003	79	93	..	98	..	113
2004	81	95	..	91	..	113
2005	80	96	..	91	..	115
2006	..	..	..	..	..	..
<b>Sweden</b>	Year 1995=100					
2002	108	92	..	77	91	107
2003	..	..	..	..	..	..
2004	..	..	..	..	..	..
2005	..	..	..	..	..	..
2006	..	..	..	..	..	..
<b>Iceland</b>	Year 1980=100					
2002	84	121	..	69	94	2,761
2003	90	113	..	67	96	2,818
2004	89	109	..	65	93	2,909
2005	89	105	..	62	91	3,026
2006	85	100	..	60	87	3,231

1) These data are not available for Faroe islands and Greenland.

2) Iceland: Beer: 1989=100.

3) Sweden: Spirits, wines and strong beer.

**Table 7.** Consumer expenditure on alcohol and state revenues from alcohol in the currency of each country (millions), 2002–2006.<sup>1)</sup>

	Consumer expenditure on alcohol					Alcohol expenditure as a % of household consumption	State revenue from alcohol as a % of:		
	Spirits <sup>1)</sup>	Wines	Long drinks	Beer <sup>2)</sup>	Total		consumer expenditure on alcohol	total State revenue	direct and indirect taxes
<b>Denmark</b>									
2002	7,967	..	..	6,020	13,987	2.2	..	0.90	1.03
2003	9,384	..	..	5,800	15,184	2.3	..	0.84	0.97
2004	8,393	..	..	4,973	13,366	1.9	..	0.70	0.80
2005	9,061	..	..	4,901	13,962	1.9	..	0.57	0.65
2006	..	..	..	..	..	..	..	0.55	0.64
<b>Finland</b>									
2002	1,099	892	149	1,824	3,965	5.8	51.8	5.5	4.3
2003	1,112	917	177	1,847	4,053	5.7	51.7	5.7	4.4
2004	992	872	159	1,728	3,751	5.1	46.6	4.6	3.3
2005	1,013	892	173	1,694	3,772	4.6	44.0	4.2	3.0
2006	1,083	953	209	1,681	3,926	4.6	43.3	4.2	2.9
<b>Norway</b>									
2002	3,978	7,538	..	12,291	23,808	3.5	53.3	..	..
2003	4,074	7,617	..	10,567	22,257	3.2	53.4	..	..
2004	4,284	8,061	..	10,711	23,056	3.2	..	..	..
2005	4,379	8,535	..	10,688	23,602	3.1	..	..	..
2006	..	..	..	..	..	..	..	..	..
<b>Sweden</b>									
2002	10,379	13,238	..	10,045	33,662	3.1	..	..	..
2003	..	..	..	..	..	..	..	..	..
2004	..	..	..	..	..	..	..	..	..
2005	..	..	..	..	..	..	..	..	..
2006	..	..	..	..	..	..	..	..	..
<b>Iceland</b>									
2002	..	..	..	..	14,701	3.4	41.6	2.4	2.8
2003	..	..	..	..	15,114	3.2	42.4	2.4	2.7
2004	..	..	..	..	15,718	3.0	45.0	2.3	2.6
2005	..	..	..	..	17,057	2.9	44.3	2.1	2.4
2006	..	..	..	..	19,010	2.8	42.1	2.0	2.3

1) No new statistics for Faroe Islands or Greenland.

2) Sweden: From 1995 only strong beer (>3,5 vol%).

**Table 8.** Cases of drunken driving and drunkenness arrests in the Nordic countries, 2002–2006.<sup>1)</sup>

	Number of cases of driving under the influence of alcohol <sup>2)</sup>			Cases of driving under the influence of alcohol involving accidents with injuries of people		Number of cases taken in custody for drunkenness	
	Total	Per 1,000 motor-vehicles	Per 1,000 inhabitants aged 15 years and over	Cases involving alcohol	Percentage of road accidents	Total <sup>3)</sup>	Total in the capital <sup>4)</sup>
<b>Denmark</b>							
2002	14,969	6.6	3.4	1,230	18.0	3,512	250
2003	15,802	6.9	3.6	1,189	17.6	3,422	236
2004	16,303	7.0	3.7	1,085	17.5	3,862	244
2005	14,963	7.3	3.4	870	16.1	3,381	250
2006	15,327	5.9	3.4	..	..	3,809	285
<b>Finland</b>							
2002	23,033	8.7	5.4	920	14.8	96,023	15,851
2003	24,604	8.9	5.7	993	14.4	95,275	14,176
2004	26,997	9.4	6.2	1,009	14.9	105,819	15,578
2005	26,012	8.7	6.0	857	12.2	101,856	14,787
2006	25,765	8.4	5.9	..	..	99,559	15,139
<b>Norway</b>							
2002	4,162	..	1.1	..	..	3,001	669
2003	4,559	..	1.3	..	..	3,233	659
2004	4,048	..	1.1	..	..	3,369	755
2005	4,915	..	1.3	..	..	3,599	609
2006	..	..	..	..	..	..	..
<b>Sweden</b>							
2002	14,924	..	2.0	..	..	44,163	..
2003	15,351	..	2.1	..	..	..	..
2004	15,588	..	2.1	..	..	..	..
2005	15,809	..	2.1	..	..	..	..
2006	17,420	..	2.3	..	..	..	..
<b>Iceland</b>							
2002	1,859	10.1	8.4	42	4.1	1,529	1,186
2003	1,764	9.3	7.8	36	4.5	1,595	1,326
2004	1,772	8.9	7.8	53	6.5	1,252	1,019
2005	1,946	9.1	8.3	35	5.1	1,260	956
2006	1,946	8.6	8.0	38	4.2	1,129	604

1) These data are not available for Faroe islands and Greenland.

2) Denmark and Sweden: Cases examined by the courts. Finland and Iceland: Cases registered by the police. Norway: Number of sanctions.

3) Norway: Number of sanctions.

4) Denmark: The capital district includes Copenhagen, Frederiksberg and Gentofte.

**Table 9.** Number of deaths from alcohol-related illnesses, 2002–2006.<sup>1)</sup>

	Alcohol psychosis and alcohol dependence	Cirrhosis of the liver	of wich alcoholic liver disease	Alcohol poisoning	Total	Number per 100,000 inhabitants aged 15 and over
ICD-10	F10	K70, K73–74	K70	X45		
ICD-9	(291, 303)	(571)	(571.0– 571.3)	(980)		
<b>Finland</b>						
2002	121	..	664	468	1,471	34.4
2003	144	..	643	532	1,572	36.6
2004	140	..	831	614	1,864	43.1
2005	173	..	976	561	2,033	46.7
2006	..	..	..	..	..	..
<b>Norway</b>						
2002	190	181	181	23	394	10.9
2003	166	168	168	61	395	10.9
2004	169	208	208	40	417	11.3
2005	..	..	..	..	..	..
2006	..	..	..	..	..	..
<b>Sweden</b>						
2002	301	590	..	139	1,030	14.1
2003	..	..	..	..	..	..
2004	..	..	..	..	..	..
2005	..	..	..	..	..	..
2006	..	..	..	..	..	..
<b>Iceland</b>						
2002	3	2	1	1	7	3.1
2003	1	2	2	0	3	1.3
2004	5	6	3	0	11	4.8
2005	4	11	9	1	16	6.9
2006	..	..	..	..	..	..

1) No new statistics for Denmark (since 1995) and Greenland. Faroe Islands do not have this kind of statistics.



**CAN – Centralförbundet för alkohol- och narkotikaupplysning**  
Box 70412, 107 25 Stockholm  
Telefon 08-412 46 00, Fax 08-10 46 41, can@can.se, www.can.se

## Forskningsanslag från SRA



### Systembolagets råd för alkoholforskning

#### Ansökningsår 2007

Systembolagets råd för alkoholforskning (SRA) lämnar stöd till såväl samhällsvetenskaplig som medicinsk alkoholforskning. Forskning av särskild betydelse för det förebyggande arbetet mot alkoholskadorna prioriteras. Rådet gör en i förhållande till Systembolaget oberoende prövning av inkomna ansökningar om forskningsmedel, utifrån projektens vetenskapliga kvalitet och samhälleliga relevans. Möjlighet finns även att söka stipendier för forskning utomlands, alternativt söka medel för att bjuda in gästforskare till svenska forskargrupper. Även initieringsanslag kan komma i fråga. För årets utdelning disponerar rådet 3 miljoner kronor. Medel ges endast i undantagsfall till ograduerade forskare.

Administrationen sköts av Centralförbundet för alkohol- och narkotikaupplysning (CAN). Ansökningsblanketter och anvisningar kan laddas ner från CANs hemsida [www.can.se/sra](http://www.can.se/sra) eller rekvireras från SRA, CAN, Box 70412, 107 25 Stockholm, telefon 08-412 46 00.

Fullständiga ansökningshandlingar skall insändas i **ett original och 12 kopior**, samtliga sorterade, till ovanstående adress (ansökan tas inte emot per fax eller e-post). Besöksadressen är Klara Norra Kyrkogata 34, Stockholm.

**Ansökan skall vara rådet tillhanda senast den 14 september 2007.**

Ni som tidigare erhållit anslag och vill söka fortsättningsanslag för projektet skall till sedvanlig ansökan bifoga rapport om hur arbetet fortskridit, s k årsrapport, samt vetenskaplig och ekonomisk redovisning. Samtliga blanketter kan laddas ner från CANs hemsida.

#### **KONTAKTPERSONER:**

*Ulf Guttormsson, 08-412 46 19, [ulf.guttormsson@can.se](mailto:ulf.guttormsson@can.se)*

*Britta Grönlund, 08-412 46 30, [britta.gronlund@can.se](mailto:britta.gronlund@can.se)*

**[www.can.se/sra](http://www.can.se/sra)**